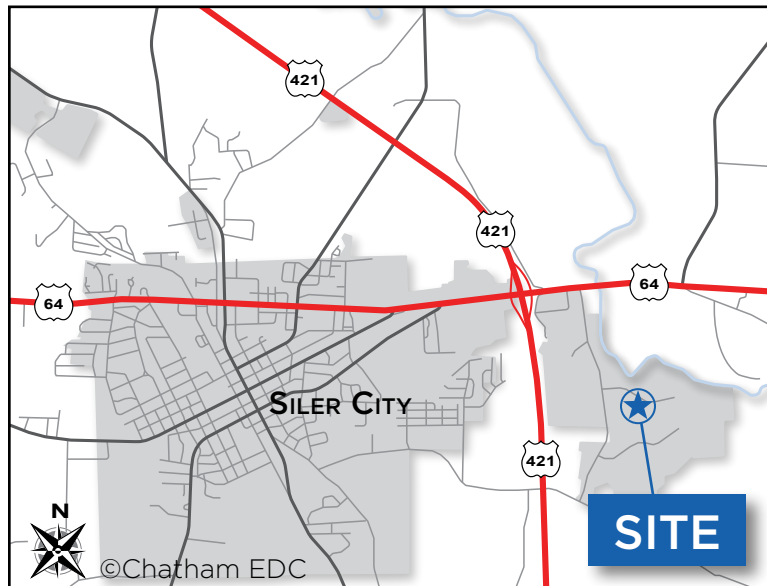
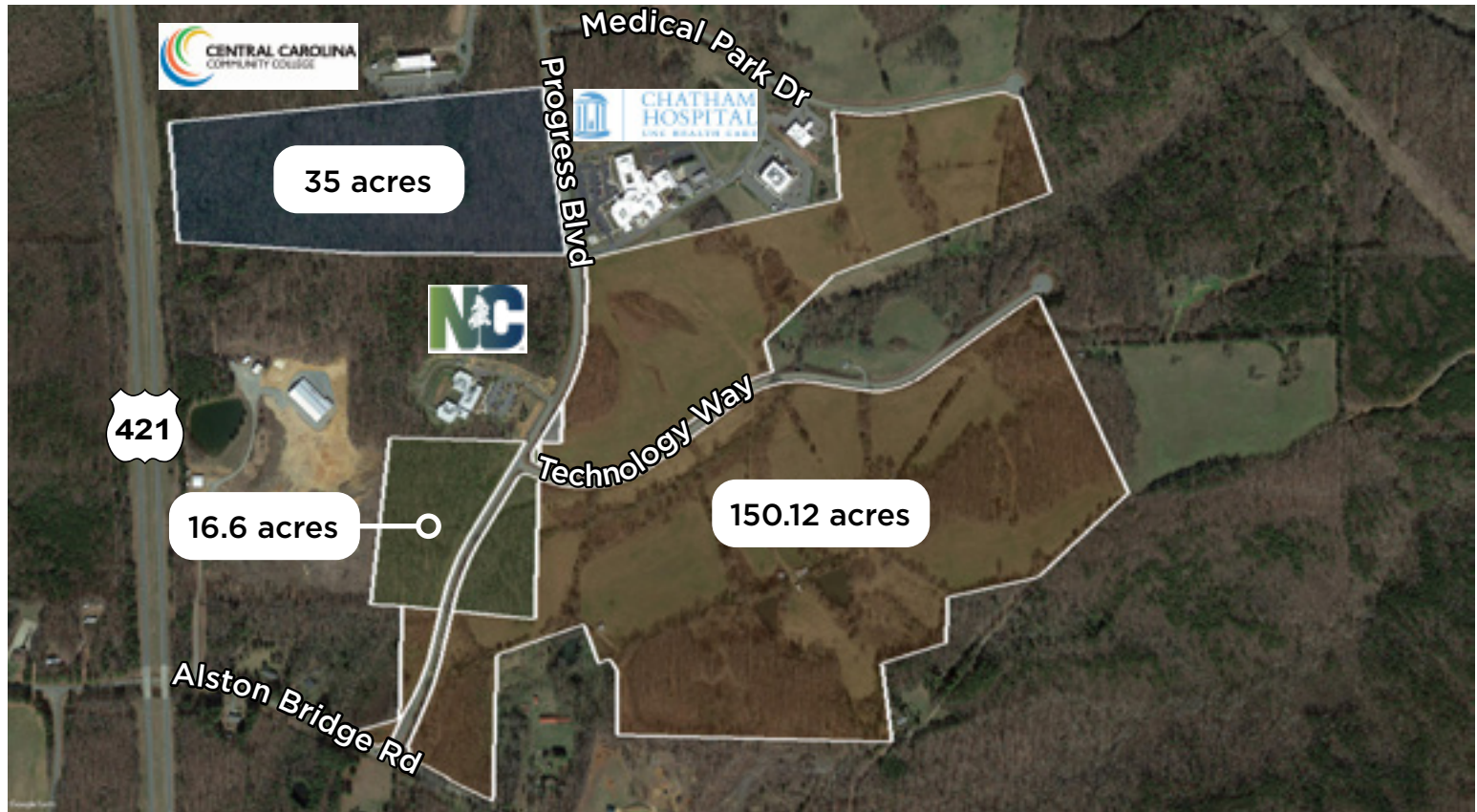


LAND FOR SALE

# Central Carolina Business Campus

Progress Blvd., Siler City, NC



## PROPERTY HIGHLIGHTS

- ±202 acres available
- Substantial due diligence complete
- Property can be subdivided based on prospective user's needs
- Located at the intersection of US Hwy 64 and US Hwy 421, with easy access to Greensboro and Raleigh-Durham
- Zoned Heavy Industrial by Town of Siler City
- All infrastructure is in place
- Covenants in place
- Local incentives available
- Join Central Carolina Community College, Chatham Hospital (UNC Health Care), Avantus Renal Therapy and Chatham Youth Development Center

## CONTACT

Chatham Economic Development Corporation  
919-542-8274  
chathamedc.org

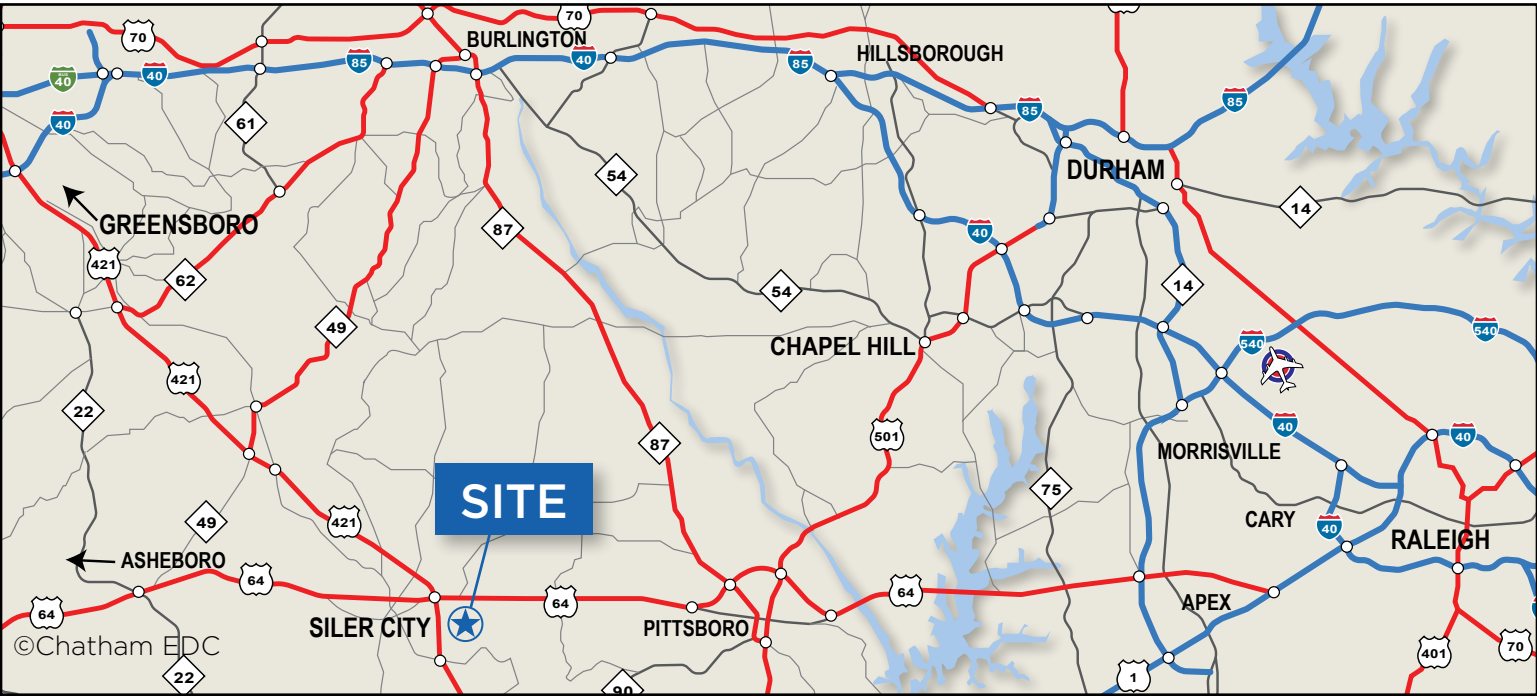
Information contained herein was obtained from sources deemed to be reliable; however, Chatham County Economic Development Corporation makes no guarantee, warranties or representation as to the completeness or accuracy thereof.

LAND FOR SALE

# Central Carolina Business Campus

Progress Blvd., Siler City, NC

## Regional Overview



DRIVE-TIME DATA	30 minutes	60 minutes	90 minutes
Total Businesses	2,961	80,063	144,465
Total Employees	26,602	1,166,192	1,988,239
Total Residential Population	104,235	2,258,044	4,431,267

Chatham County is part of the Research Triangle, one of the fastest growing metropolitan areas in the country, populated by more than two million people. The region is consistently ranked as one of the best places to live as well as for doing business by publications such as Forbes, Money and Bloomberg.

The county also benefits from its proximity to Greensboro and the Piedmont Triad, which has a strong manufacturing base and transportation infrastructure.

Central North Carolina is often cited for its moderate climate and convenient location offering residents the ability to be in the mountains or at the beach within a three-hour drive. There are several top universities nearby, including the University of North Carolina at Chapel Hill, Duke University and North Carolina State University, as well as world-class entertainment and recreation amenities.

Chatham County is well-positioned for any business to take advantage of the highly skilled workers, consumer markets and suppliers of two diverse economic regions in North Carolina.

### CONTACT

Chatham Economic Development Corporation  
919-542-8274  
chathamcdc.org





LAND FOR SALE

# Central Carolina Business Campus

Progress Blvd., Siler City, NC

Siler City Overview



## DEMOGRAPHICS

	1 mile	3 mile	5 mile
Population	372	7,565	11,963
Households	100	3,005	5,011
Median Household Income	\$31,258	\$32,145	\$36,796
Total Businesses	27	470	589
Total Employees	364	5,102	5,971

## CONTACT

Chatham Economic Development Corporation  
919-542-8274  
chathamcdc.org





LAND FOR SALE

# Central Carolina Business Campus

Progress Blvd., Siler City, NC

Site Photos



## CONTACT

Chatham Economic Development Corporation  
919-542-8274  
[chathamcdc.org](http://chathamcdc.org)





LAND FOR SALE

# Central Carolina Business Campus

Progress Blvd., Siler City, NC

Existing Businesses



## CONTACT

Chatham Economic Development Corporation  
919-542-8274  
[chathamedc.org](http://chathamedc.org)

